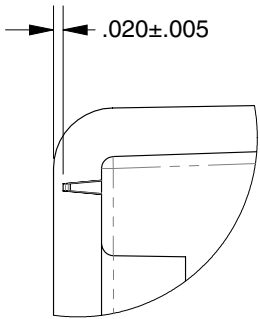
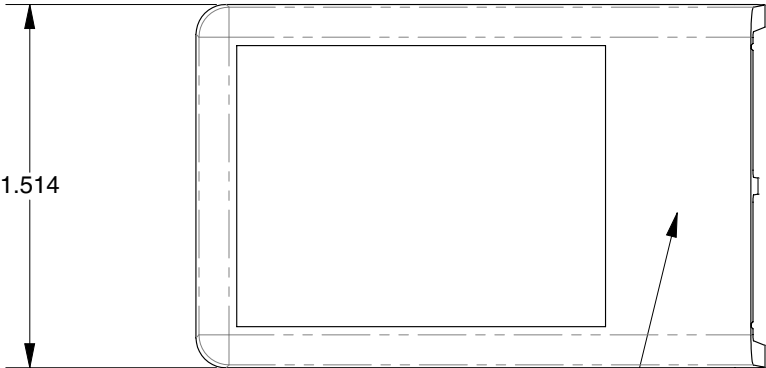
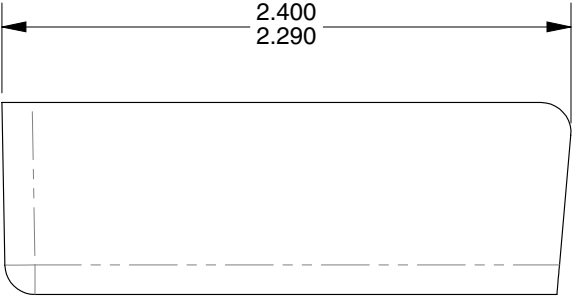


NOTES: (UNLESS OTHERWISE SPECIFIED)

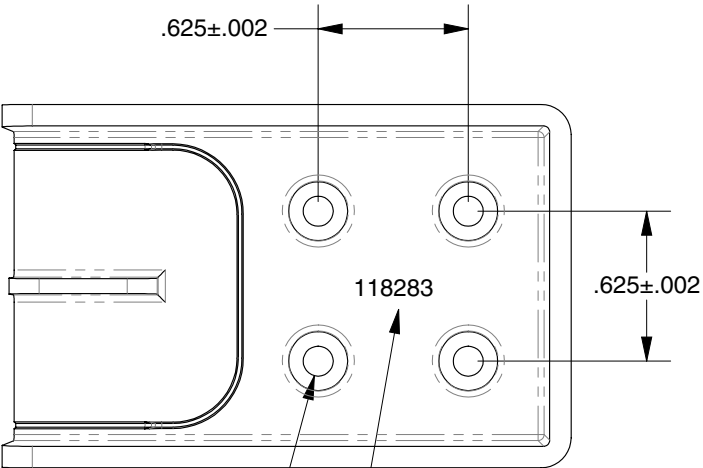
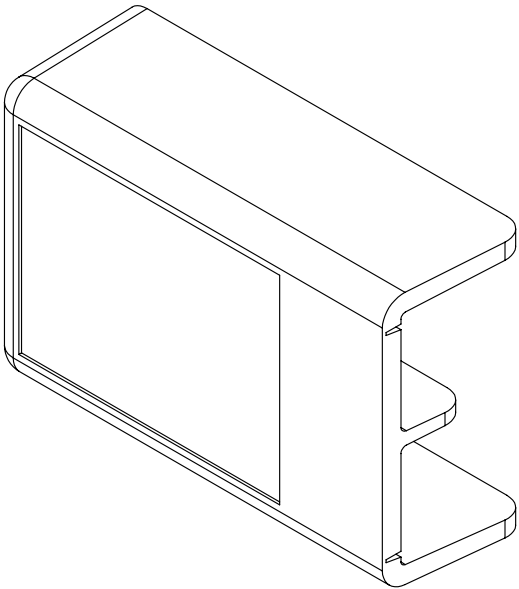
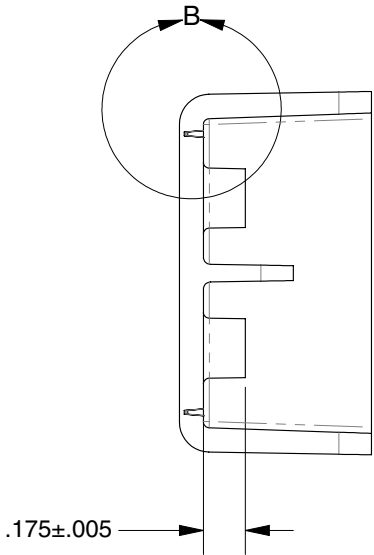
1. CONFORM TO ALL APPLICABLE
TELECT WORKMANSHIP STANDARDS.
2. DIMENSIONS AND TOLERANCES PER
ANSI Y14.5M.
3. DRAFT ANGLE: 1°.
4. ACCEPTABLE FLASH: 0.005.
5. STRAIGHTNESS: 0.006 IN/IN.
6. GATE VESTIGE: FLUSH OR BELOW.
7. FINISH: SPE/SPI #5 OR SMOOTHER.
8. THE 3D MODEL IS THE MASTER FILE.
THE GEOMETRY WITHIN THE MASTER
FILE MUST BE USED TO FABRICATE THIS
PART. DIMENSIONS SHOWN ARE
DEEMED CRITICAL AND WILL BE USED AS
INSPECTION/PROCESS DIMENSIONS.
FOR DIMENSIONS AND FEATURES NOT
SPECIFIED, APPLY THE FOLLOWING
TOLERANCES TO THE 3D CAD FILE
GEOMETRY TO FABRICATE THIS PART.
HOLE TO HOLE: ±.010
EDGE TO HOLE: ±.010
EDGE TO EDGE: ±.010
HOLE SIZE: ±.005
ANGULARITY: ±1°
9. MATERIAL AND GRADE:
-1, -2: BAYER PC/ABS BLEND UL94 V-0.
-3 : BAYER MAKROLON 6455 PC UL94-V0

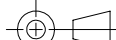


DETAIL B
SCALE 2.5 : 1



TEXTURE: EDI EQUIVALENT
TO MT-11010, TYP THIS
SURFACE ONLY.



A3	---	CLARIFIED MATERIAL FOR TRANSPARENT	9/24/2014	DHK	118283-3	TRANSPARENT	---	---	---	---	---			
A3	MEX5405	CONVERT TO SOLIDWORKS, ADDED COLOR ITERATION	8/5/2014	TMT	118283-2	746 WHITE	---	---	---	---	---			
A2	---	OPENED TOLERANCE	11/16/2007	GDM	118283-1	549 BLACK	---	---	---	---	---			
REV	ECO	DESCRIPTION	DATE	BY	FINISH PART NO	BASE PART COLOR	FINISH COATING	INK COLOR	ART FILE	ART REVISION	PLATING			
drawing no 118283		fabrication drawing COVER:FU PNL,INPUT,2 POS,100AMP,KO		rev A2.1	units inch	designed by C. WEBER	date 11/4/1999	tolerances (unless otherwise specified) .X ±.060 hole size: ±.005 .XX ±.020 angularity: ±1° .XXX ±.010		sheet 1 of 1	sheet size B	scale NTS	project 3848	projection 
						drawn by C. WEBER	date 6/8/2005							