

BCS HD Low-Profile Modular DSX-3 System

Copper :: 48-Position & 24-Position; Ultra High Density; Matches SONET/MUX Multiples

Overview

Get the industry's highest-density DSX-3 connectivity solution with Telect's new 48-position Broadband Connectivity System II (BCS II) panel. This ultra-efficient platform is the only DSX-3 system available that fits 48 terminations in just 6 inches of vertical rack space and 24 terminations in just 3.5 inches.

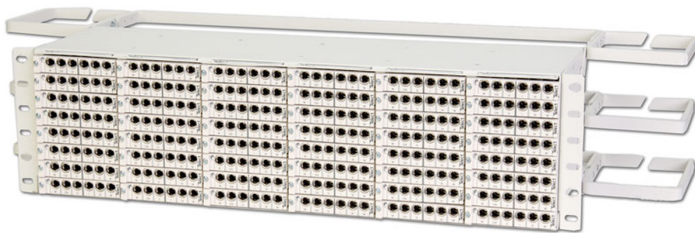
The cost-effective and dynamic BCS II offers the optimum blend of high density, cable management and advanced functionality. Module choices include 6-port DSX-3 configurations for bi-directional signal monitoring from a single location.

Applications

- High-density central offices
- SONET/MUX interface (matches circuit multiples)

Primary Benefits

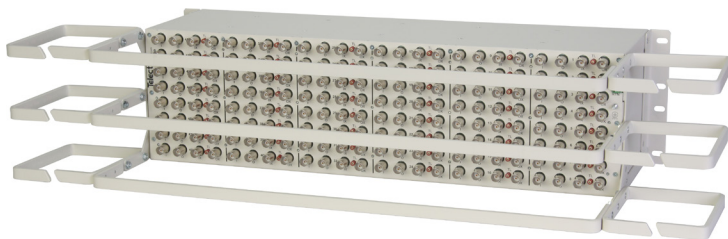
- Industry-leading density: 48 DS3 positions in an ultra compact 6" high x 23" wide footprint
- Standard cabling practices can be used
- PCB technology creates a more reliable connectivity solution than traditional coax systems, while significantly decreasing overall weight
- Pre-wireable backplane enables rapid expansion and deployment
- 6-port DSX-3 module enables bi-directional monitoring from a single location
- Integrated cable management helps keep large amounts of cable well organized
- All Telect DSX-3 products are backed by Telect's DSX lifetime warranty



Front view, 48-position chassis loaded with 6-port module
010-4801-4848



Front view, 48-position chassis
010-0000-4848



Rear view, with pre-connectorized backplane and cable management
010-0000-4848



Close-up of six-port DSX-3 module
010-4801-0410

BCS HD Low-Profile Modular DSX-3 System

Copper :: 48-Position & 24-Position; Ultra High Density; Matches SONET/MUX Multiples

Ordering Information

Description	Part Number
48-position chassis 23" W x 5.95" H x 5.93" D (584 mm x 151 mm x 151 mm)	010-0000-4848
24-position chassis 19" W x 3.45" H x 5.93" D (482 mm x 88 mm x 151 mm)	010-0000-2448
48-position chassis loaded with 6-port DSX-3 modules	010-4801-4848
6-port DSX-3 module	010-4801-0410
4-port DSX-3 module	010-4801-0401
3-port DSX-3 module	010-4801-0407

Accessories

BNC patch cord removal tool	097197
Mini-WECO terminating plug	100293
Pin plug	102147
Mini-WECO circuit guard	PLG-MW-BLK
Patch cords	see Telect.com

DSX-3 Jack Specifications

Electrical

Insertion loss	< 0.30 dB at DS3 signal rates for assemblies that do not include a monitor network < 1.00 dB at DS3 signal rates for assemblies that include a single monitor network
----------------	---

Crosstalk ≤ -60 dB

Return loss < -26 dB at DS3, STS-1 and E3 rates

Monitor level 21 dB +/-1.5 dB below signal level

Contact resistance < 0.01 ohms

Characteristic impedance 75 ohms

Mechanical

Insertion force 10 lbs. (4.6 kg) maximum

Withdrawal force 7 lbs. (3.2 kg) maximum

Life Min. 10,000 insertion/withdrawal cycles

Environmental

Thermal limits -67 to 185°F (-55 to 85° C) operating and non-operating

Thermal shock Per MIL-STD-202, method 107D

Humidity 0 to 95% operating and non-operating

48-position/23" chassis shown below

