

24VDC Battery Disconnect Kit

Installation Guide

Circuit disconnect switches are optional equipment on the Telect Seismic Indoor Battery Rack. The 24VDC Battery Disconnect Kit modifies a rack shelf to include circuit disconnect switches.

Each kit includes

- two circuit breakers (1)
- mounting brackets (5)
- covers (3)
- faceplate (4)
- insulating pad (6)
- hardware
- cables (2 and 7) to connect the circuit breakers to the negative battery terminals

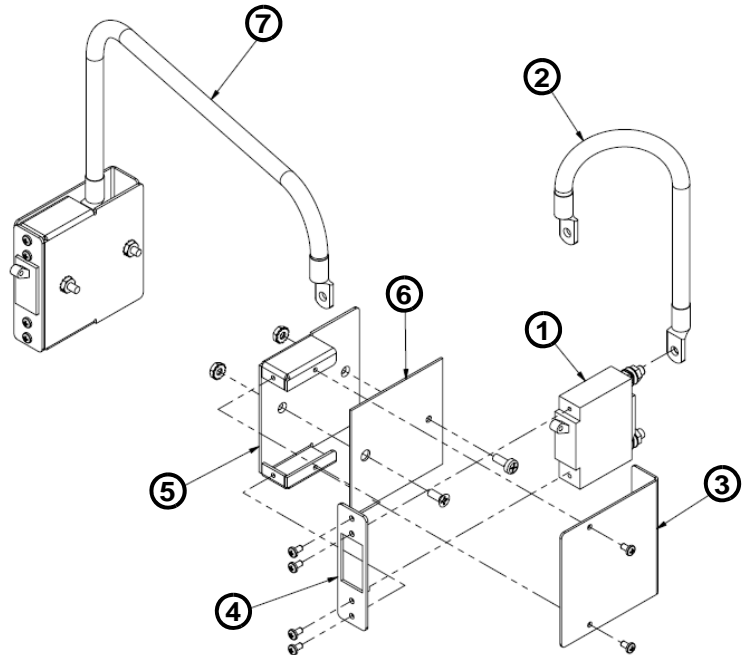


Figure 1 - Components

The circuit breakers function as disconnect switches for each battery circuit, not to protect against power surges.

A separate kit is required for each shelf. Each shelf is two circuits of two batteries each. The circuit breakers connect between the hot collector bus cable and the hot terminal of the second battery in the circuit.

Please read these instructions carefully before beginning installation. If you need assistance, call Technical Support at 1-888-821-4856 (domestic calls), or 509-921-6161 (Option 2), or email us at getinfo@telect.com.

Inspect equipment after unpacking and compare it to the packing list.

Immediately report any shipping damage, defects, or missing parts to Telect at 1-800-551-4567. Keep all documentation that comes with your shipment.

Telect is not liable for shipping damage. If the product is damaged, notify the carrier and call Telect's Customer Service Department at 1-800-551-4567 (domestic only) or 1-509-926-6000 for further recourse.

NOTE: For service or warranty information, please visit the telect.com website, or email inquiries to getinfo@Telect.com and click on the “Support” tab, or phone us at 800-551-4567 (domestic only) or 509-926-6000.

WARNING

WARNING! Batteries and facility power systems present electrical voltage and amperage levels that are considered an electrical hazard. Make sure that only qualified personnel are allowed to install, operate, maintain, or otherwise come in contact with this equipment. Remove all watches and jewelry before installing battery disconnect kits. Only use insulated tools when working with batteries and facility power.

Procedure steps:

1. Disconnect power to the battery rack. Set all circuit breakers to OFF.
2. Install a circuit-breaker mounting bracket (item 5) and insulating pad (item 6) on the right-hand side of the battery shelf with one 10-32 pan-head screw, one 10-32 flat-head screw, and two 10-32 keps nuts.
3. Remove one 1/4-20 nut and flatwasher from each stud on the back of the circuit breaker.
4. Disconnect the hot collector bus cable from the hot battery terminal. Reconnect the cable to the lower (load) terminal on the circuit breaker and secure with one 1/4-20 nut and flatwasher.
5. Connect the short cable (item 2) supplied with the kit to the upper (line) terminal on the circuit breaker and secure with one 1/4-20 nut and flatwasher.
6. Connect the short cable to the hot battery terminal.
7. Install the circuit breaker (item 1) into the mounting bracket face plate (item 4) with two 6-32 pan-head screws.
8. Torque all battery connections as specified by the battery manufacturer’s current specifications.
9. Install the mounting bracket face plate onto the mounting bracket with two 6-32 pan-head screws.
10. Install the circuit breaker cover (item 3) with two 6-32 pan-head screws.
11. Repeat steps 3 through 9 for mounting the second circuit breaker on the left-hand side of the battery shelf.

This procedure is complete.