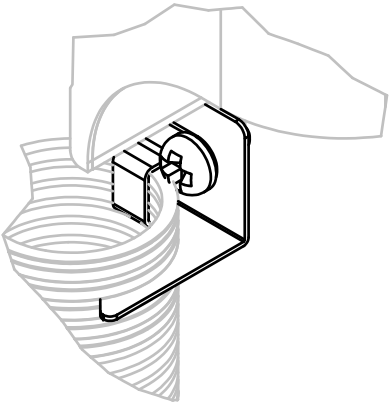
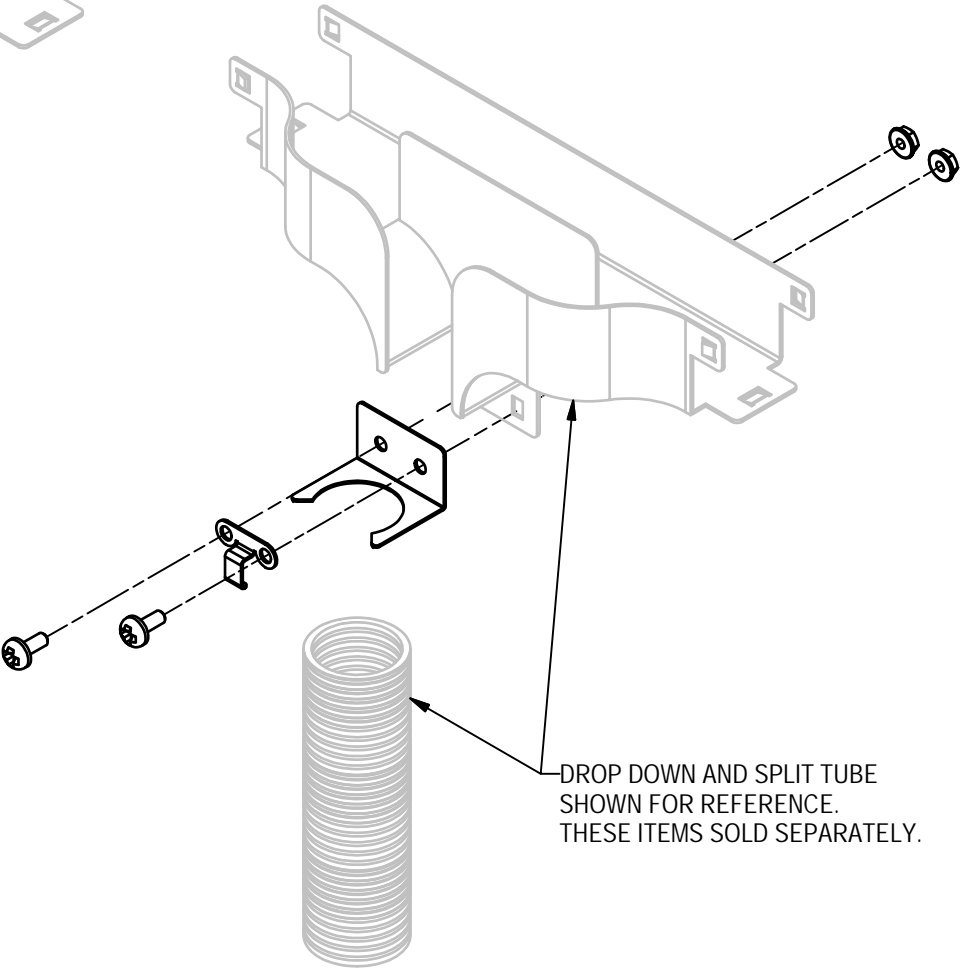
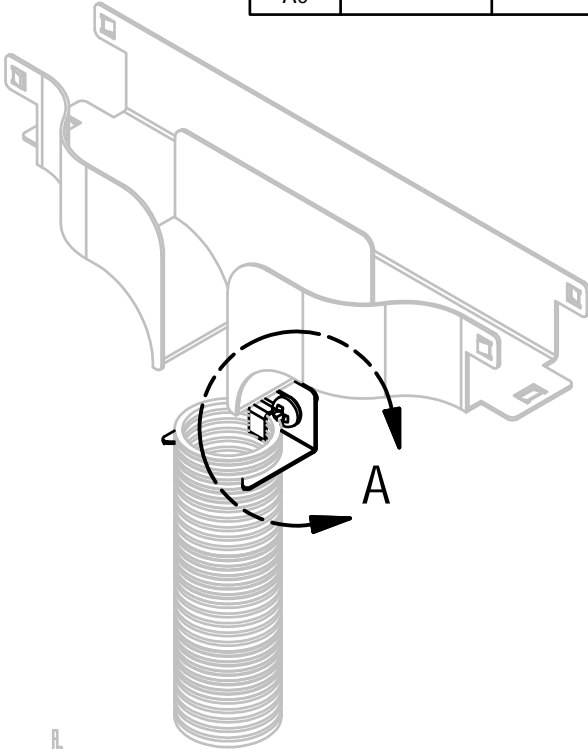
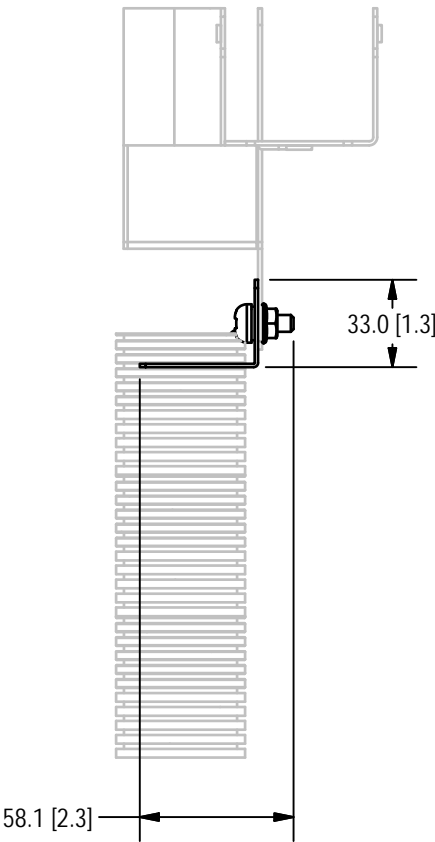
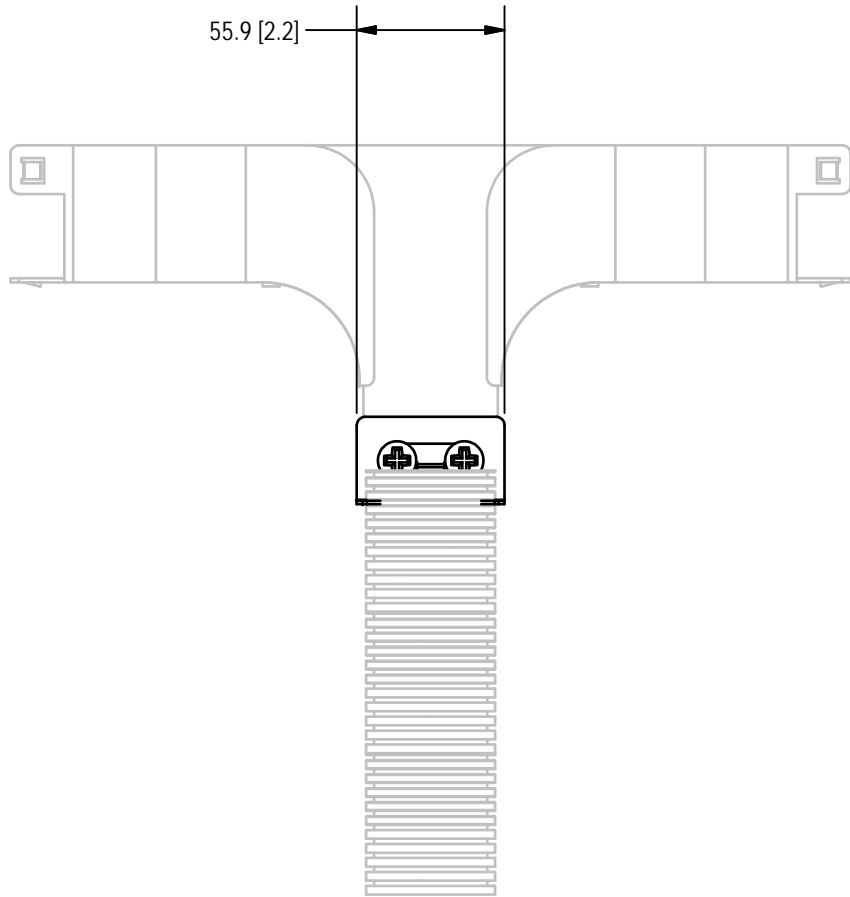


- NOTES:** (UNLESS OTHERWISE SPECIFIED)
- 1. DIMENSIONS ARE IN MILLIMETERS [INCHES].
 - 2. DIMENSIONS ARE FOR REFERENCE ONLY.
 - 3. HARDWARE INCLUDED WITH KIT.
 - 4. KIT ACCOMODATES 2" SPLIT WALL TUBING ORDERED SEPARATELY.



DETAIL A



REV	ECO	DESCRIPTION	DATE	BY
A0	---	REDRAW TO MATCH ORACLE BOM	9/28/2010	K. POLGAR

KIT INCLUDES:

- (2) 1/4-20 X 0.625 [15.9] SCREW
- (2) 1/4-20 FLANGE LOCK NUT
- (1) FLANGED BASE MOUNT
- (1) TUBE CLAMP

DESIGNED BY T. CARLISLE	DATE 9/23/1999	Telect [®] N. 1730 Madson Street, PO Box 665 Liberty Lake, Washington 99019 (509) 926-6000		
DRAWN BY T. CARLISLE	DATE 9/23/1999	CONNECTING THE FUTURE		
NOT FOR REPRODUCTION COPYRIGHT: 1999 This document contains proprietary information that is property of TELECT, INC., Spokane, Washington. It is intended for the exclusive use of our customer for information, installation, and/or service. The recipient agrees not to reproduce or copy this document or its contents in whole or in part without prior written permission from TELECT, INC. This document must be returned promptly if no longer needed or upon written request from TELECT, INC.		TITLE CUSTOMER APPLICATION DRAWING		
		CABLE LINKS:K22 COLLAR,2" SPLIT TUBING		
DRAWING NO 027-1000-4290		SHEET SIZE B	UNITS IN	
		PROJECT 3922	SCALE NONE	SHEET 1 OF 1
				REV A0